



Where North and South Meets East and West

The Salina Rotator

October, 2020

A Publication for the Salina Noon Rotary Club—Organized 1917



*Together, we see a world where people
unite and take action to create lasting change —
across the globe, in our communities, and in ourselves.*

Meets Every Monday Noon
Tony's Pizza Events Center
Heritage Hall

Salina Rotary Treasurer's Report

First of all, the board has decided to continue "in-person meetings" and zoom meetings until there is a significant negative change in the COVID guidelines. An example would be if USD 305 decided to change to "virtual only" classes. If that were to happen we would discontinue "in-person" meetings while that arrangement was in place. For those of you who are "Senior Actives" (have reached the age of 65 and your age + years in Rotary = 85) there is no change in your billing situation. You will still be billed for the basic quarterly dues of \$63 + \$11 for each meeting you attended/meal cost during the prior quarter. For the majority of the membership who have been billed the basic dues and full 12 meals per quarter (except the quarter just ended) which has equaled \$195. Your quarterly statement will show the same amount due for the upcoming quarter, \$195.



Doug Alt

HOWEVER, and this is what you need to READ CAREFULLY, we realize some of you may not feel comfortable attending "in-person" meetings during this COVID crisis and the board respects your decision. You will only need to pay the basic dues of \$63. PLEASE include a note with your payment if that is the case so I can note your payment correctly. So, if your statement SHOWS \$195 due and you don't feel comfortable attending in person just send a check back for \$63 with a note explaining same. If you aren't attending and the reason is NOT Covid related then we would expect you to pay the full dues/meals as you have in the past.

There are a few of you who have not paid your dues from the quarter just ended.

continued on page 4

NOON ROTARY TABLE PRAYER
Be present at our table Lord
Be here as everywhere adored
These mercies bless and grant that we
May feast eternally with Thee. AMEN



Is it the truth?
Is it fair to all concerned?
Will it build goodwill and better fellowships?
Will it be beneficial to all concerned?





PRESIDENT, ROTARY INTERNATIONAL

Holgerson Knaack

GOVERNOR, DISTRICT #5680

Dana Brewer

GOVERNOR ELECT, DISTRICT #5680

Fred Heismeyer

SALINA ROTARY CLUB OFFICERS

President: Michelle Peck

President-Elect: Jenell Hulse

Secretary: Sean Ryan

Treasurer: Doug Alt

Immediate Past President: Amy Cole

BOARD OF DIRECTORS

All Club Officers excluding Treasurer

International Service: Beth Shearer

Community Service: Jeni Adams

Membership: Brenda O'Gorman

The Rotary Foundation: David Hodges

Public Image: Mary Landes

2017 Elected Member: Jeni Adams

2018 Elected Member: Katy England

2019 Elected Member: Brenda O'Gorman

COMMITTEE / CHAIRPERSON

Sergeant at Arms: Kyle Smith

Club Service / Family: Katy England

Club Historian: Jeff Koksall

Scholarship: Aaron Morrison &

Daran Neuschafer

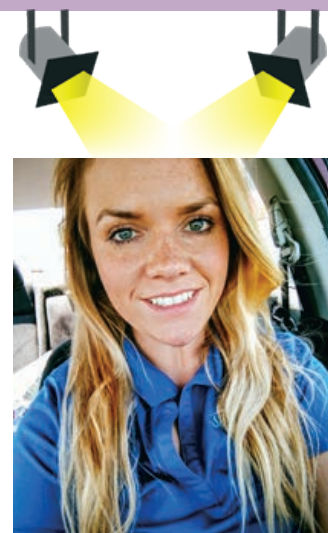
The Rotator: Michelle Peck

www.SalinaRotary.org

Member Spotlight

I am pleased to spotlight Kimberly Hernandez in October. She is our newest Rotarian. Please get to know Kimberly and make her feel welcome.

I request your help to implement the "Reunite" October Rotary initiative to reach out to past Rotarians and invite them back to the Salina Rotary Club. November the 8th the club will hold its annual Fall Membership Social at Ya Ya's in downtown Salina. As membership chair, I ask that you call your Rotary friends who have not been active or discontinued their membership. Please help us to invite them back and "reunite" by attending this fun social event or a regular meeting. We look forward to furthering the warm fellowship of Rotary! See you there!



Kimberly Hernandez

I was born in Fort Sill, Oklahoma, and moved multiple times as a child due to my father serving our country as a drill sergeant and pilot in the US Army for 12 years. Most of my childhood I lived in the small town of Herington, Kansas, but eventually graduated with honors in 2010 from Hillsboro High School. Due to the frequent moving I was homeschooled for several years before starting public school. I served as president of my class from the sixth grade up through my junior year, and served as student body president as a senior.

As a senior I started working as a waitress at Applebee's in Newton, KS, and maintained the job for several years. Being a waitress those years really helped me come out of my comfort zone! I began to express interest in management and signed papers to become an Assistant Manager on my 21st birthday (21 is the minimum age). I quickly fell in love with management. I excelled in my position and became the youngest General Manager the franchise ever had just days after my 22nd birthday. My first year as a General Manager I was stationed in Great Bend where I received the "Rookie of the Year" award. As my daughter became of school age I wanted to move to a town with a great school system. That is when I made the move to Salina. I worked a Training General Manager for several years before ending my time at Applebee's right around my 10 year anniversary.

I then started my current venture as a Business Manager at ServiceMaster of Salina where I manage all of our janitorial accounts. I have thoroughly enjoyed bringing my years of management experience into this current role and learning new

continued on page 4

Mark Your Calendar

October 5

Rotary board meeting 11AM
at Tony's Pizza Event Center

October 8

Fall Social

Homewood Suites by Hilton
5:30PM

October 23-24

District Conference
Salina Hilton Garden Inn
Salina, KS

Club News

October is Economic and Community Development Month

Rotary supports investments in people to create measurable and enduring economic improvement in their lives and communities.

The Rotary Foundation enables Rotarians to invest in people by creating sustainable, measurable and long term economic improvements in their communities and livelihoods by:

- Building the capacity of entrepreneurs, community leaders, local organizations, and community networks to support economic development in impoverished communities;
- Developing opportunities for productive work;
- Reducing poverty in under-served; and
- Supporting studies for career-minded professionals related to economic and community development.



Zoom meetings are now available along with the in person meetings. If you are not able to join us in person during the month of October feel free to join by zoom! All program speakers will be recorded and posted on our website.

Topic: October Rotary Meetings
Time: 12 noon on Mondays

Join Zoom Meeting

<https://us02web.zoom.us/j/4064106236>

October Birthdays

Name	Day	Joined	Name	Day	Joined
Kimberly Hernandez	10/2	2019	Jenell Hulse	10/10	2018
Don Schroeder	10/3	1995	John Ryberg	10/14	2016
Doug Stein	10/6	1993	Marshall Stanton	10/15	1984
Mike Beatty	10/7	1968	Adrienne Allen	10/24	2010
Lewis Reid	10/9	1985			

October Speakers

Program Chair: Mitch Robinson

October 5

Lindsey Dreiling
Executive
Director of
Aviation
Strategy, Kansas
State University



Tony's Event Center

October 12

Chief Brad
Nelson
Salina Police
Department



Tony's Event Center

October 19

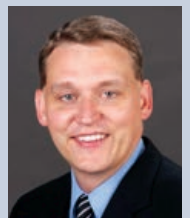
Phillip
Smith-Hanes
County
Administrator,
Saline County
Kansas



Tony's Event Center

October 26

Mike Schrage
City Manager,
City of Salina



Tony's Event Center

History and Meaning Rotary Wheel



A wheel has been the symbol of Rotary since our earliest days. The first design was made (1905) by Chicago Rotarian Montague Bear, an engraver who drew a simple wagon wheel, with a few lines to show dust and motion. The wheel was said to illustrate "Civilization, Movement and Service work in action." Most of the early clubs had some form of wagon wheel on their publications and letterheads.

In 1922, it was decided that all Rotary clubs should adopt a single design as the exclusive emblem of Rotarians. So, the present gear wheel, with 24 teeth and six spokes was adopted by the "Rotary International Association." The gear teeth around the outside represent the fact that work is to be done. The six spokes represent the inner direction and path of our Vocational Service, through the representation of our membership via the classification system. Similarly, these same spokes represent an outward distribution path of Rotary's ideals of service and the Four Way Test... going out toward the community, vocations and businesses that our members represent.

A group of engineers advised that the geared wheel was mechanically unsound and would not work without a "keyway" in the center of the gear to attach it to a power shaft. So, in 1923 the keyway was added to signify the wheel was a "worker and not an idler". The keyway in the center of the hub is of great significance, because it represents the individual Rotarian member, who is the key factor in every club. Quality members are the keys, needed for the hub to engage with the shaft and turn, putting the energy into motion and creating the power for the gears to do their work.

At the 1929 Rotary International Convention, it was determined that blue and gold would be the official colors of the organization, so the wheel was designed with these colors. The four blue bands within the outer radius of the gear represent our four avenues of service. And the design which we now know was formally adopted as the official Rotary International emblem.

The Rotary wheel is also referred to as "The Mark of Excellence".

Treasurer *continued from page 1*

Remember, we only billed you for two meetings in August and the normal four in September which = \$66 in meals plus \$63 basic dues = \$129. The same guideline will apply so just send a check for the \$63 plus the \$63 for the new quarter. You might wonder why there is a need to pay the basic \$63. Our club is still being billed the normal dues and related items from Rotary International and our District so we each need to do our part to pay those fees.

We, of course, don't know when the COVID crisis will ease and we get back to some form of normalcy. Therefore, we plan to continue the billing process in the same fashion until further notice. Just keep the lines of communication open with any changes in your status by replying to our Club Administrator, Deb Howard, or to my email which is altdoug67@gmail.com.

Thanks in advance for your attention to this situation.

Spotlight *continued from page 2*

skills along the way. The owners, DeWayne and April Russell, encouraged me to join a club to meet other professionals throughout the city. That is when I tried out Rotary! At the first meeting I was rather nervous, but as soon as I realized we got to sing at each meeting I was sold, and became a member shortly after on October 28, 2019. I have heard many beautiful voices and have met such kind members. I have never felt so at home in a club. One of my favorite experiences to date has been the Christmas time- getting to experience all of the talent our members have. I look forward to continuing to grow and have more experiences as a proud Rotarian.

Very Respectfully,
Kimberly Hernandez

Business Manager
ServiceMaster of Salina
785-643-9916